

Polymer Make-up System

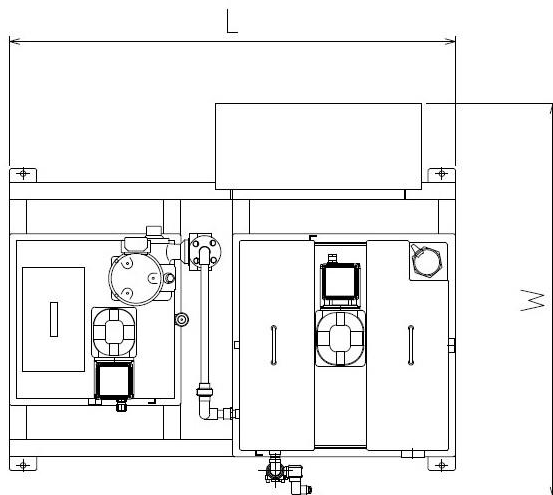
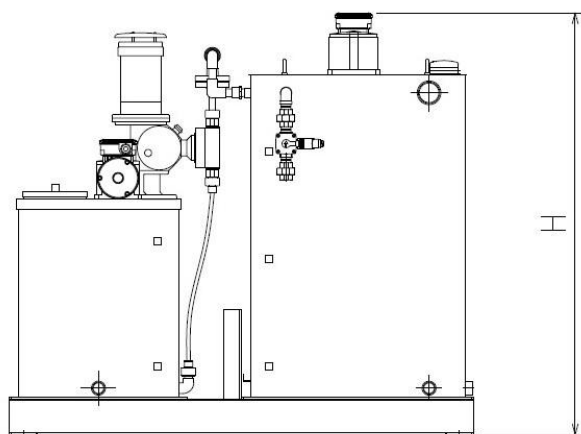


- ☞ Compact Design, Small Space
- ☞ Continuous Automatic Generation
- ☞ High Durable, All Stainless Steel

Polymer Make-up System For Liquid LTN Series

Model	Capacity (ℓ / h)	Storage Volume (ℓ)	Power (kW)	Dimentions(mm)			Weight(kg)	
				L	W	H	empty	operation
LTN-500	500	100	0.5	1,300	1,150	1,180	230	590
LTN-1000	1,000	150	0.7	1,550	1,350	1,290	300	940
LTN-1500	1,500	200	0.7	1,750	1,500	1,350	400	1,360

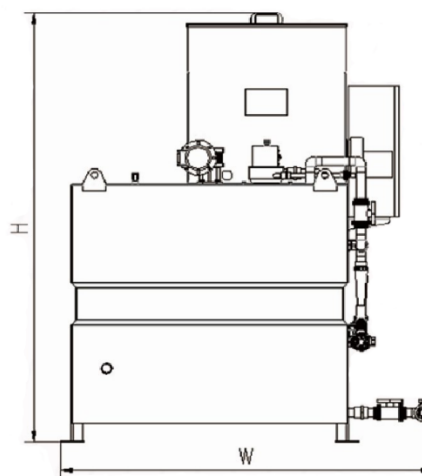
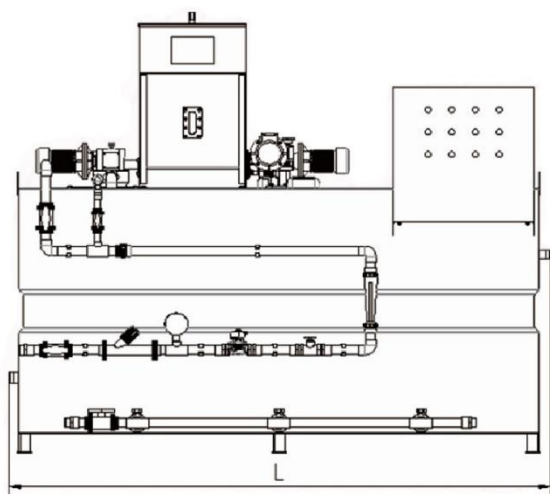
※Available for 200~480V, CE Marking, UL, CCC Spec
Chemical Pump is optional.



Polymer Make-up System For Powder KTN Series

Model	Capacity (<i>l</i> / h)	Hopper Storage Amount (<i>l</i>)	Power (kW)	Dimentions(mm)			Weight(kg)	
				L	W	H	empty	operation
KTN-500	500	35	0.92	1,430	1,040	1,520	320	1,020
KTN-1000	1,000	90	2.43	2,060	1,410	1,800	500	2,300
KTN-1500	1,500	110	2.43	2,190	1,480	1,840	540	2,680
KTN-2000	2,000	160	2.43	2,270	1,620	2,000	640	3,540
KTN-3000	3,000	180	4.87	2,480	1,750	2,300	660	4,560
KTN-4000	4,000	210	4.87	2,800	1,850	2,390	790	5,740

※Available for 200~480V、CE Marking、UL、CCC Spec
Chemical Pump is optional



NOAT INC.

Address : Nakamachidai 1-8-9-404,
Tsuzukiku, Yokohama, Japan

TEL : 045-507-9303

URL : <http://www.noat.co.jp>

